

skypod®

Eye-catching, affordable and easy to install pitched PVC-U skylights



skypod®

Eye-catching, affordable and easy to install pitched PVC-U skylights

LUMINA DESIGN

ROOF LANTERN SOLUTIONS



skypod®

PITCHED PVC-U SKYLIGHTS

There are lots of ways to add light to buildings, but none are as stylish as Skypod pitched PVC-U skylights

Impress customers and end-users with desirable, space-enhancing skylights

The Eurocell Skypod pitched skylight system enables you to create an eye-catching, contemporary feature that floods the interior of a property with natural light. It brings life and freshness to uninspiring flat-roofed buildings, and makes a stunning alternative to conventional conservatory roofs.

Skypod skylights add height, light and volume to any living space. They are the perfect choice for a wide range of refurbishment, extension or new-build projects – including reception areas, classrooms, orangeries, kitchen-diners and garage conversions.

Affordable, energy efficient and attractive – the perfect alternative to aluminium

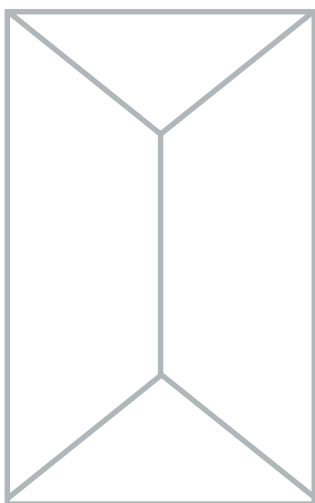
Eurocell designed Skypod as an affordable alternative to aluminium skylights, making it accessible for more applications, to more people. As well as value issues, the 'industrial' aesthetic of aluminium skylights is unsuited to many properties and not to everyone's taste.

Skypod offers significant energy-efficiency improvements, with a U-value as low as 1.0* – helping your customers to save on their energy bills. The PVC-U cappings also help homeowners to match the appearance of their skylight to existing PVC-U windows and doors.

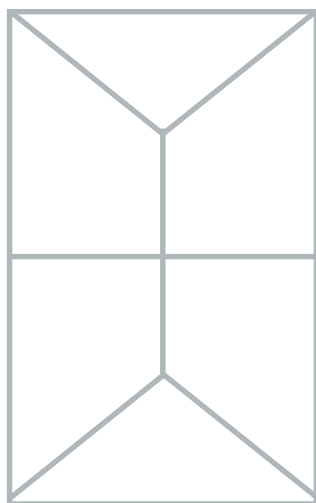


skypod®

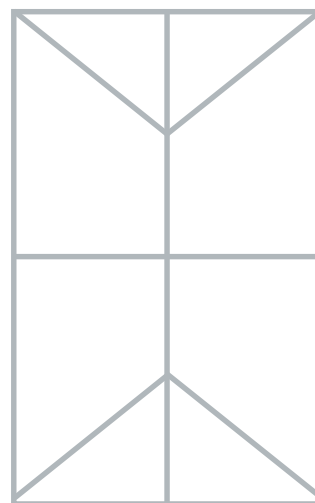
SEE THE FULL RANGE



Up to 1.5m x 2.75m

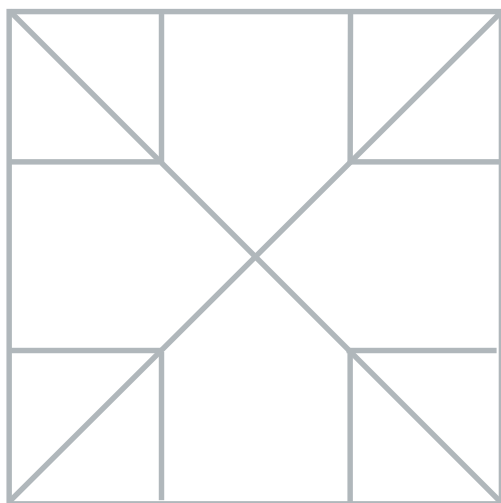


Up to 1.5m x 7.45m

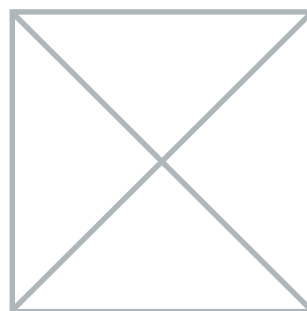


Up to 2.75m x 8.7m

Note: Design will vary dependent on size. All Skypod skylights are made-to-order, and you will receive a design to sign-off before the item goes into production.



skypod^{SQ}
Up to 2.75m x 2.75m



skypod^{SQ}
Up to 1.5m x 1.5m



MORE FLEXIBILITY

FOUR SKYLIGHT STYLES ARE NOW AVAILABLE

No side rafter bars

With the fewest possible number of slimline bars needed to create uninterrupted glazed surfaces of up to 1.5m x 2.75m, Skypod with no side rafter bars is the cleanest, simplest way to introduce overhead natural light into any room space. It offers a practically unobstructed window on the world above and, come rain or shine, keeps homeowners warm and comfortable thanks to its temperature controlling glass and high levels of energy efficiency.

With side rafter bars

By introducing additional bars to the standard Skypod design, side rafter bars extend the possibilities for fully glazed rooflights to spans of up to 1.5m wide x 7.45m long. The result is a dazzling feature roof that turns what could so easily be an underwhelming flat roof extension into a year round living space with all the natural light and lofted headroom your customers could ever wish for.



Skypod with no side rafter bars

Three-bar gable

The extra strength and rigidity of our 3-bar Skypod option not only allows you to install even longer, even wider vaulted rooflights into your customers' homes. It also gives a much more traditional 'orangery' style look to their rooflight, with the introduction of classically proportioned end panels in a spacious vaulted glass ceiling up 2.75m wide x 8.7m long in size.

Skypod SQ

The alternative to a single span rectangular rooflight, Skypod SQ is the square skylight that offers perfectly balanced sightlines and, thanks to its simple 4-hip design, higher levels of natural light than conventional designs of the same surface area. Because Skypod SQ can be produced in sizes right down to 0.5m x 0.5m, it means even the smallest flat roofed space in the home can benefit from day long natural light.



With this 3-bar gable design, you can create larger skylights

skypod^{SQ}

Now you can give your customers a square skylight – with symmetrical looks!



1.0*
U-VALUE



SLEEK DESIGN

skypod[®]

EXCEPTIONAL STYLE & PERFORMANCE

Colours to frame the view

Like all Eurocell PVC-U products, Skypod comes with an exact colour-match guarantee. That means the colour is precisely matched to all Eurocell window, door and conservatory roof products, creating a co-ordinated, consistent look across any property.

Skypod has a white internal finish as standard, to maintain a bright, fresh interior. A range of external colours is available to complement existing architectural style, as well as a choice of glass options.

Ten-year guarantee

Skypod skylights are guaranteed for ten years. That means you can give your customers the assurance of a robust, well-designed, precision-made product that's built to last – manufactured by the UK's leading PVC-U specialist.

UNIQUE

SPIDER BAR GLAZING CAP

FIXED **20°** PITCH

ARCHITECTURAL
COLOURS

FRAME COLOURS



WHITE
White interior



**ANTHRACITE
GREY**
White interior



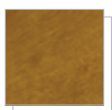
**AVAILABLE
SEPTEMBER 2015
ANTHRACITE
GREY**
Anthracite interior



**MOONDUST
GREY**
White interior



ROSEWOOD
White interior



**GOLDEN
OAK**
White interior

GLASS COLOURS



BLUE



NEUTRAL



BRONZE



AQUA



CLEAR

**ADDITIONAL COLOURS AND
SPECIFICATIONS ARE MADE TO
ORDER ON EXTENDED LEAD TIMES**